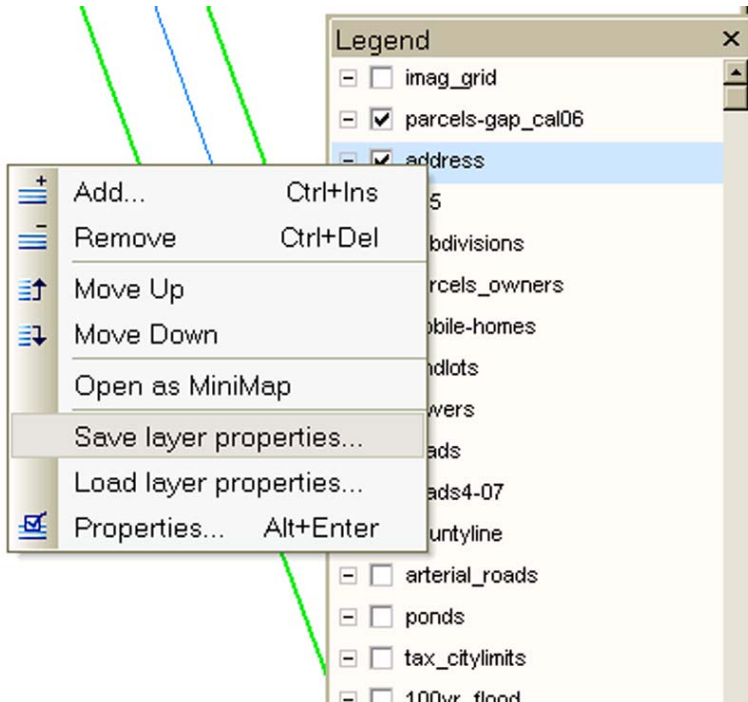


Saving and re-using color & label settings for layers

After you set your color and label preferences for a layer, you can apply the same settings to other similar layers.

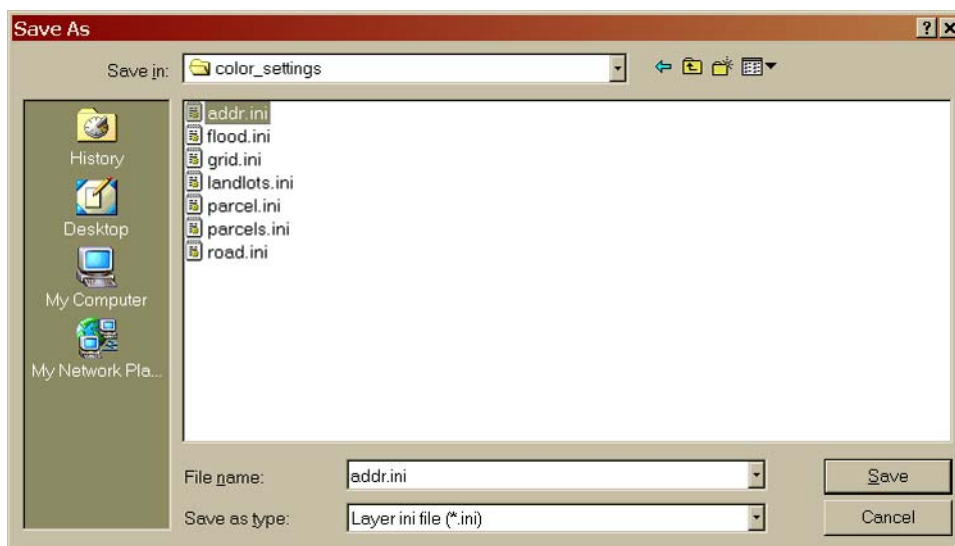
First **save** your color settings

Right-click on a **layer** name in the **Legend**



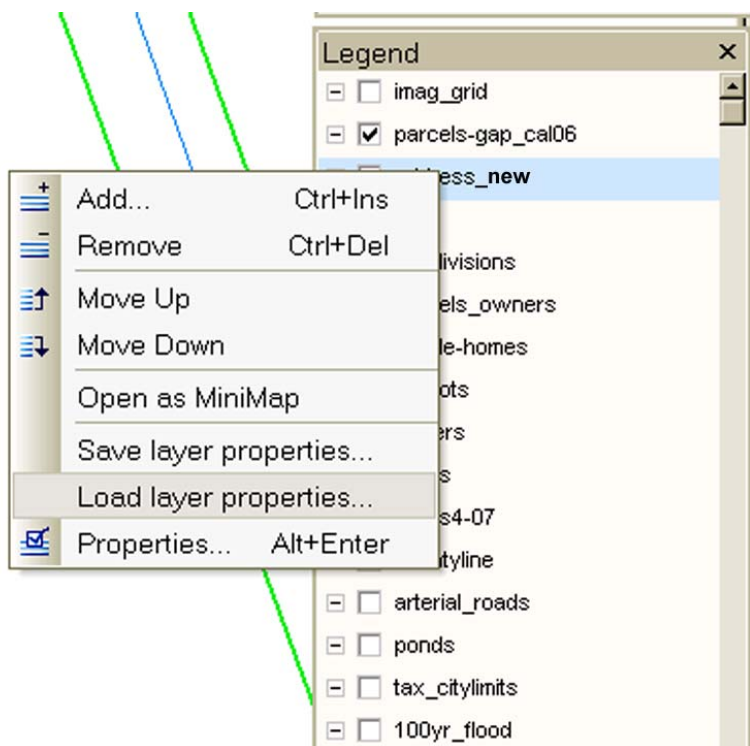
Choose **Save layer properties**

The **Save As** window opens -

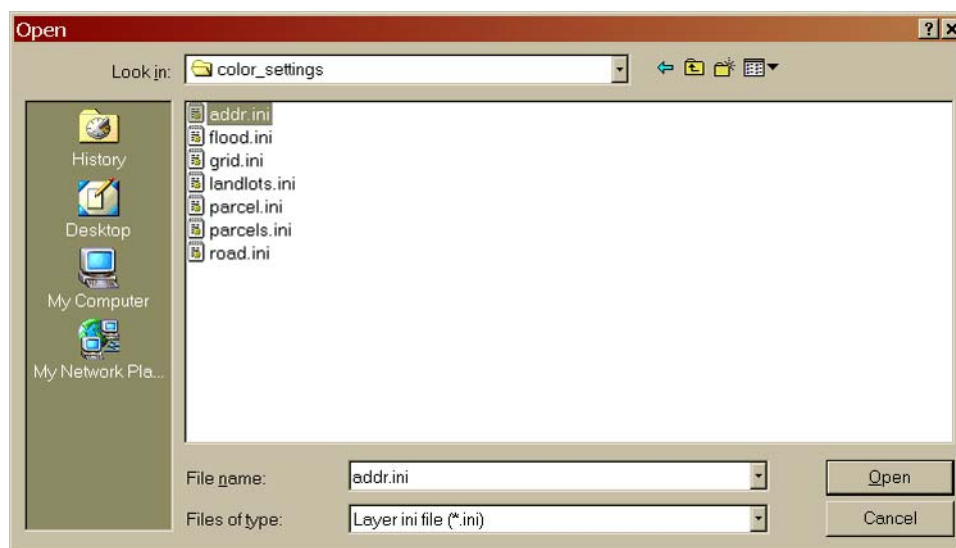


Choose a place to save the color settings **.ini** file
Give the **.ini** file a name related to the layer

Then select the **layer** to which you want to apply the color & label settings
Right-click on the layer and choose **Load layer properties** -



The **Open** window appears
Select the appropriate **.ini** file



Hit the **Open** button to apply the settings.