

## GAP Group, Inc 2011 Business Meeting



1/27/2011

1

## Items to be Discussed

- What's Planned for Update?
- What's Beyond Next Update?
- WinGAP SQL
- Training

1/27/2011

2

## The Update

- Version #: 3.13.000.000
- Should be available next week
- Major update
  - New/Modified tables
  - New/Modified screens
  - New/Modified prompts
  - Revised menus
  - Revised procedures

1/27/2011

3

## The Update – New Tables

- Will be added to handle SB346
- Tables will provide means of:
  - Storing schedules for exemption & tax calculations
  - Storing data resulting from exemption & tax calcs
  - Exporting data for printing notices & tax bills

1/27/2011

4

## The Update – New Tables

### Schedule Tables

- TaxDist
- TaxType
- ExemptCode
- Mill Rate
- TaxFee
- TaxType\_Exempt
- TaxDist\_Hmstd (???)

### New Data/Export Tables

- FixedAssmt
- CalcExemptions
- TaxDetail
- TaxMaster
- D\_TaxDetailx (Export)
- D\_TaxMasterx (Export)

1/27/2011

5

## The Update – Modified Tables

- SB346Val field added to
  - Reprop
  - ACESSORY
  - Commimp
  - Prcres
  - Prcacc
  - Prccom

1/27/2011

6

## The Update – Modified Tables

- SB346Val
  - Numeric (10 wide with no decimals)
  - Contains the SB346 allocated value of the improvement

1/27/2011

7

## The Update – Modified Tables

- LocalHSFlg field added to
  - Reprop
  - Accessory
  - Commimp
- Logical (True/False)
- Used to designate if improvement is eligible for local homestead exemption

1/27/2011

8

## The Update – New Screens

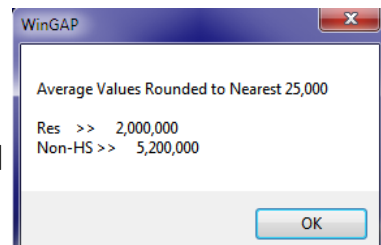
- 5 to 6 new screens for capturing estimated tax calculation information
  - Schedule screens
  - Part of SB346 presentation
- 3 new screens for editing improvement SB346 values
  - Sub-screens of Res Imp, Comm Imp and Accessory screens
  - Covered in SB346 presentation

1/27/2011

9

## The Update – New Screen

- “Average Property Value” screen
  - Access thru Reports >> Administration >> Average Property Values menu
  - Used for digest submission
  - Avg value for homestead
  - Avg value for non-homestead
  - Excludes Personal & PU



1/27/2011

10

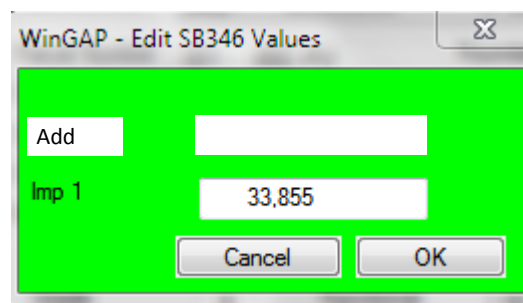
## The Update – New/Mod Screen

- New field added to accommodate values beyond SB346 Sales Value (sb346add)
- Edit screen for SB346 improvement values modified

1/27/2011

11

## The Update – New/Mod Screen



WinGAP - Edit SB346 Values

Add	<input type="text"/>
Imp 1	<input type="text" value="33,855"/>

Cancel OK

1/27/2011

12

## The Update – New/Mod Screen

- SB346 Add Value will not be allocated
- SB346 Add Value + SB346 Value will display as Improvement Value on Real Property Gen Info SB346 screen

1/27/2011

13

## The Update – Modified Screens

- Res Imp, Comm Imp & Accessory
  - Modified to identify presence of SB346 value
    - Green highlighting of value field
  - Local Homestead checkbox added
    - Available only when homestead code is not blank and not equal to S0

1/27/2011

14

## The Update – Modified Screens

- Residential

WinGAP - Residential Improvements - 1 of 1: 001 002 PU

Improvement Key: 51301500 0 SF 20: No Sketch Photo MH Info Pricing

Parcel Number 001 - -002 -PU Foundation Masonry Floor Fin

Class Agricultural Ext Walls Interior Wall

Strat Improvement Roofing Interior Ceiling

Occupancy 1 Family Roof Shape Heat

Bedrooms 0 Rooms 0 Floor Cons Story Height

Grade / Age Grade 0

Year Built 2010

Eff Year Built 0

Obav Cond

Neighborhood 1.00

Depr / Factors Functional 1.00

Economic 1.00

Physical Ovr 0.00

Complete 1.00

Physical 0.00

CD 1.00

Plumbing Full Baths 0

Half Baths 0

Standard Complements 0

Extra Fixtures 0

Fireplace / Misc Edit FP

Structure Areas Edit Areas

Basement / Attic Option Descriptive Square Foot Heated Area 0

Basmt Desc

Basmt Finish

Basmt Area Basmt % Fin Basmt Qual

0 0.00

Attic Desc

Attic Area Attic % Fin Attic Qual

0 0.00

Values Override Improvement 150,000 MAV 150,000 Ovr

Last Calc 0 Ovr Date // Ovr Rsn

Appraiser

State Homestead

Local Homestead

House No Ext Dir Units Street Name Type Quad

0

1/27/2011

15

## The Update – Modified Screens

- Commercial

WinGAP - Commercial Improvements - 1 of 1: 001 002 PU

Improv No 1 Section No 1 Imp: 1 Sec: 1 Key: 2912 1

Parcel No. 001 - -002 -PU Const Type: Masonry Load B

Class Commercial Life Exp: 50 Sch L

Strat Improvement Wall Hght: 12

Used As Apts - High Rise Year Built 2005

Built As Apts - High Rise Eff YR Built

Value Adjustments Grade: 100

Phy Dep: 0.99

Phy Dep Ovr 0.00

Econ Obsl: 0.10

Other Fact: 1.00

Pct Comp: 1.00

Neighborhood 1.00

Value Information MAV Ovr

Structure	26,057	26,057
Extra Features	60	60
Identical Units	1	
Section	26,117	26,117
Override	0	
Imp Value	26,117	Pricing
Ovr Rsn:		
Ovr Date:	//	
Last Calc	26,117	

Ovr Rsn:

Ovr Date: //

Last Calc 26,117

State Homestead

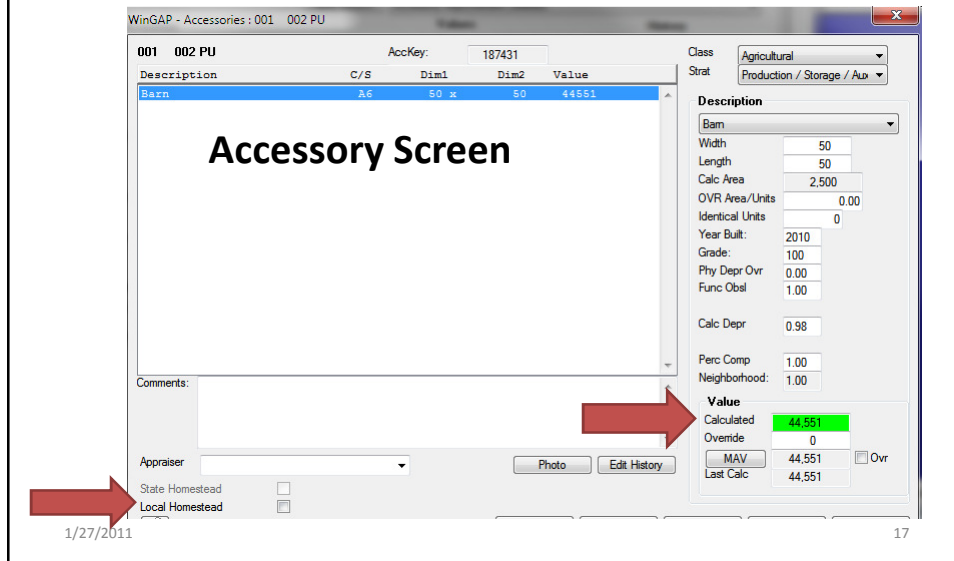
Local Homestead

House No Ext Dir Units Street Name

1/27/2011

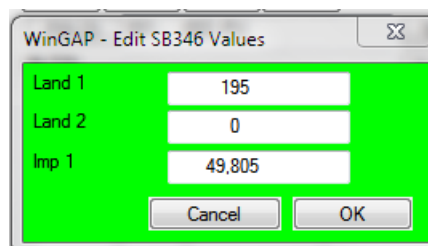
16

## The Update – Modified Screens



## The Update – Modified Screens

- Real Property – Edit SB346 Values
  - No class/strat for imp
  - Imp 1 value cannot be changed
  - Imp 2 value removed



## The Update – Modified Screens

- Assessment Notice “Print” screen

WinGAP - Change of Assessment

Mailing Date: 01/24/2011  
Last Day for Appeal: / /

Property Type:  Real  Personal

Appeal Term:  30 Days  45 Days

Print ALL Notices

Primary Contact: \_\_\_\_\_  
Alternate Contact: \_\_\_\_\_

Use this contact information regardless of the contact information present on the property.

Sort Order:  Zip Code  Parcel Number  Name  Account

Print Range: Starting: \_\_\_\_\_ Ending: \_\_\_\_\_

Count Notices: Count: 0 Processed: 0

Processed: Selected: \_\_\_\_\_ Percent: 0%

Buttons: Help View  Print Preview Cancel Print Notices

1/27/2011

19

## The Update – Modified Screens

- Sales – Net Sales Price now displays

Sales Information

Buyer: Reese, Kristi  
Seller: Reese, Kristi  
PT-61 #: PT 61 140 2011

Sale Price: 50,000  
Adjustment: 12,800  
State (Y/N): N

Net Sales Price: 37200  
Instrument: \_\_\_\_\_  
Class: Agricultural

1/27/2011

20

## The Update – Modified Screens

- Conservation Use
  - Show Percent Change Prompt checkbox added
    - Provides a re-calc opportunity when unadjusted CU Value has not been modified

WinGAP - Conservation Use

Parent Parcel: 061 - -007

**Information**

Original CU Value	175,066
Original CU Year	2009
Base CU Year	2011 <input type="button" value="Edit"/>
Total CU Acres	46.35
Total FMV Acres	46.35

Show Percent Change Prompt

1/27/2011

21

## The Update – New Prompt

- SB346 Re-Allocation

WinGAP - SB346 Sales - 001 002 PU

SB346 Salesprice allocation has already occurred once on this parcel. Do you wish to delete the existing value allocation and re-allocate?

NO = Keep my existing SB346 allocation as it currently exists

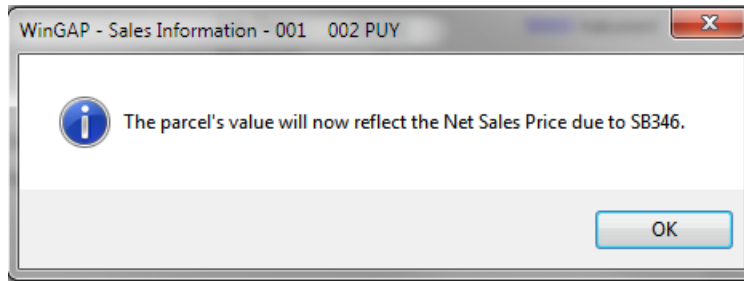
YES = I know what I'm doing - throw away the old info and reallocate

1/27/2011

22

## The Update – Modified Prompt

- Prompt when initially adding SB346 sale

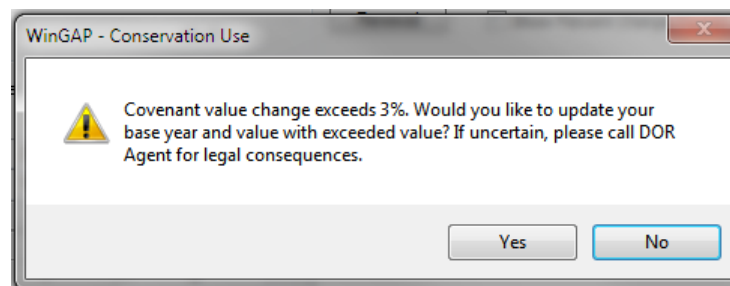


1/27/2011

23

## The Update – Modified Prompt

- Conservation Use Value Prompt
  - Informs user that 3% or 34.39% limit of change has been reached



1/27/2011

24

## The Update – Modified Prompt

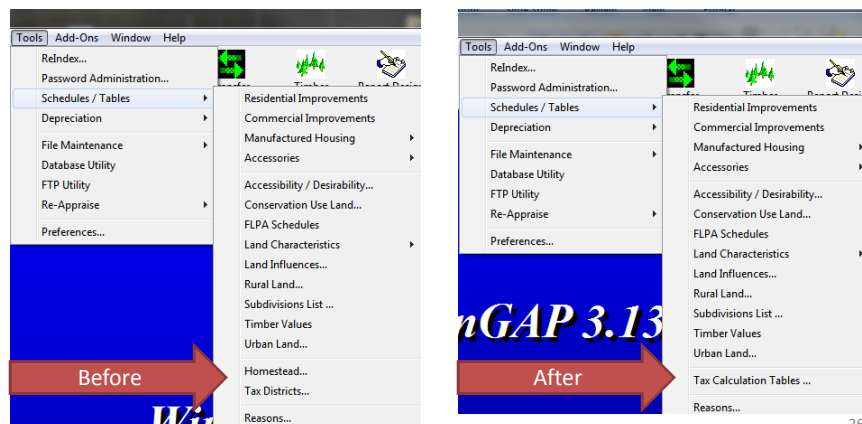
- Conservation Use
  - Will no longer appear when accessing the Conservation Use screen
  - Appears only when
    - Apply or OK are clicked
    - Calculated unadjusted CU Value is not equal to the previous unadjusted CU Value and
    - Unadjusted value is compared to previous year CU value to determine change > 3% or 34.39%

1/27/2011

25

## The Update – Revised Menu

- Tools >> Schedules Tables



26

## The Update – Revised Menu

- Real Property “Printer” menu

GAP - Real Property General Information - Barksdale, Kathlyr

< Top < Prev Next > End >> Account Number 3881

PIN (10) 001 - 001 - Tax District 01

1 PIN XXX 236 Asmt Reason A

**Street Information**

House #	Ext	Dir	Units	Street Name
100	MRE			caney bay

Type	Quad	Latitude	Longitude	Zip Code
Rd	xc	1234567890123	1234567890123	30821-

Print PRC

Print PRC without Photo

Print PRC with Photo and Large Sketch

Preview PRC

Preview PRC without Photo

Preview PRC with Photo and Large Sketch

PRC Holding Bin

Real Property Return Form

Homestead Application

Current Use

Preferential

PT50R text Changed to ....

1/27/2011

27

## The Update – Revised Procedures

- SB346 Value Allocation
  - Previously allocation was applied to land & sum of improvement values
  - Allocation will now be applied to land & individual improvement values
  - Allocation Calculation
    - Allocation Pct (AP) = Current MAV ÷ Net SP
    - Allocated Value = AP \* component MAV
    - AP not applied to extra features & MH adds

1/27/2011

28

## The Update – Revised Procedures

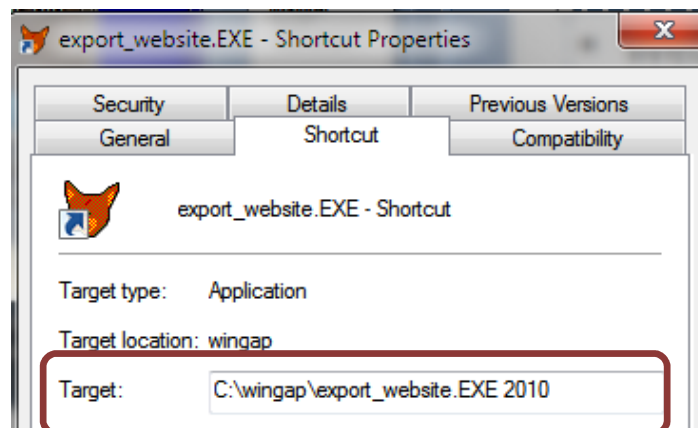
- Website Export (export\_website.exe)
  - Can now receive a command line parameter designating a single year
  - Shortcut created to export\_website.exe in wingap folder
  - Target of shortcut Properties modified by adding year at end of line

1/27/2011

29

## The Update – Revised Procedures

- Website Export (Shortcut Properties)



1/27/2011

30

## The Update – Revised Procedures

- FLPA Application
  - Now prints continuation dates properly
  - Must have FLPA Year

Exemption Information	
Homestead	S0 HS App
Covenant (2)	
FLPA Yr	2009
FLPA CU Val	117,750
FLPA Exmpt	42,600

FOR TAX ASSESSORS USE ONLY					
Covenant: Begins: Jan 1, 2009	Ends: Dec 31, 2023	Covenant #	2009	160	000038
			(Yr)	(CountyCode)	(Covenant #)

1/27/2011

31

## The Update – Revised Procedures

- Conservation Use covenants with parcel acreage > 2000 acres
  - Allows entry of up to 2000 acres of CU land subrecord data
  - Exemption calculation based parcel avg \$/acre and CU value
    - $CU\ MAV = 2000 * (MAV\ land \div parcel\ acreage)$
    - $CU\ Exemption = CU\ MAV - CU\ Value$

1/27/2011

32

## The Update – Revised Procedures

- Future (SB346 parcels)
  - SB346 value from current year will become future previous MAV/FMV
  - SB346 values & flags will be removed
  - Standard ALT cap removal reason added

1/27/2011

33

## The Update – Revised Procedures

- Inventory “SN” exemption
  - Applies to State tax only
  - No new fields or procedures in general operation
  - Consolidation Report will be modified to handle SN

1/27/2011

34

## The Update – Revised Procedures

- Personal Property Reappraise
  - Last Calculated value will now reflect MAV generated during reappraise
  - Value Edit Date will display reappraise date

1/27/2011

35

## The Update – Revised Procedures

- Data Edits – SB346 Checks
  - Parcels with sales that meet SB346 criteria but are not flagged for SB346 value
  - Parcels flagged for SB346 value but do not have a SB346 qualified sale
  - Parcels where SB346 value summary is not equal to sum of SB346 components
  - Parcels where re-allocation has taken place and value of new imps has been lost

1/27/2011

36

## Beyond 3.13.0 Update

- Add functionality to Tax Calculation Tables
- Develop procedures to calculate estimated taxes and save data
- Modify routines that print NOA
- Modify PRC to print SB346 values
- Develop routines in reappraise to handle SB346

1/27/2011

37

## Beyond 3.13.0 Update

- Consolidation Reports must be changed
  - Will reflect all exemptions
- Create new appeal form
- Replace old appeal form with new one
- Modify growth routines to use SB346 values
- Determine how to handle Historic & EZ exemptions on same parcel

1/27/2011

38

## WinGAP-SQL

- Progress, though slowed, continues to be made
- All changes resulting from SB346 & other issues are incorporated into WinGAP-SQL

1/27/2011

39

## WinGAP-SQL

- Outstanding identified issues
  - 32 critical
  - 96 minor
  - 39 sketch
- Reports have yet to be done
- Special procedures are not finished
  - Data Edits
  - Growth

1/27/2011

40

## WinGAP-SQL

- Testing – Primarily handled by Steve Burnette
- Additional Testing
  - New scheme
  - Beta counties will be designated areas of program to test
    - Res Imps
    - Commercial Imps
    - Transfers
    - Etc

1/27/2011

41

## WinGAP-SQL

- Target Operational Date – moved to June/July of 2011

1/27/2011

42

## WinGAP Training

- 15 new laptops will be used
- LaptopsFurnished by GAP Group
- Used for WinGAP & Mapping/GIS training

1/27/2011

43

## WinGAP Training

- Upcoming WinGAP GCP Classes
  - WinGAP Administration
    - March 1-3
    - Hapeville
  - WinGAP Tech
    - March 28 – April 1
    - Waycross
    - SQL Reports and Routines will be covered

1/27/2011

44

